

可折叠双翼拓展箱

Foldable Double Wing Expansion Box

方寸之间
无限可能

Infinite possibilities between every inch



河北省廊坊市文安工业新区兴祖线南侧

河北佳强节能科技有限公司 Hebei Jiaqiang Energy Saving Technology Co. Ltd.

0 3 1 6 - 5 1 1 1 1 1 1

EXPANSION BOX

COMPANY INTRODUCTION

公司介绍

河北佳强节能科技有限公司
Hebei Jiaqiang Energy Saving Technology Co., Ltd



10亿+

1 billion+

年综合销售额
Annual comprehensive sales revenue



500万m²

5 million square meters

已完工项目、约700个足球场
Completed projects, approximately 700 football fields



100000m²

100 thousand square meters

佳强总部园区占地面积
Jiaqiang headquarters campus footprint



3大品类

3 major categories

下设子产品60余种
There are over 60 sub products

河北佳强节能科技有限公司成立于2016年2月，位于文安县国营小务农场，占地100000平米，共投入资金3.7亿元，职工180余人，是一家集研发、生产、销售箱式房、太空舱、钢结构等装配式建筑产业的高新技术企业。公司年产能箱式房3万套、钢结构现年产能1.5万吨(年产10万吨新厂在建)、移动太空舱600台。公司近两年产值7.9亿元，通过了质量、环境、职业健康三体系认证，现拥有发明、外观、实用新型专利40余项，公司先后被评为河北省科技型中小企业、河北省高新技术企业河北省“专精特新”中小企业、河北省创新型中小企业等荣誉称号。

Hebei Jiaqiang Energy saving Technology Co., Ltd. was established in February 2016 and is located in the state-owned Xiaowu Farm in Wen'an County. It covers an area of 100000 square meters, with a total investment of 370 million yuan and more than 180 employees. It is a high-tech enterprise that integrates research and development, production, and sales of prefabricated buildings such as box houses, spacecraft, and steel structures. The company has an annual production capacity of 30000 sets of box houses, an annual production capacity of 15000 tons of steel structures (with a new factory under construction producing 100000 tons per year), and 600 mobile spacecraft. In the past two years, the company's output value has been 790 million yuan, and it has passed the certification of quality, environment, and occupational health systems. Currently, it has more than 40 invention, appearance, and utility model patents. The company has been awarded honors such as Hebei Province Science and Technology oriented Small and Medium sized Enterprise, Hebei Province High tech Enterprise, Hebei Province "Specialized, Refined, Unique, and New" Small and Medium sized Enterprise, and Hebei Province Innovative Small and Medium sized Enterprise.

河北佳强节能科技有限公司作为中国国内的集成模块化房屋专业制造商之一，从材料零部件的入厂生产检验到产品出厂的质量检测，全过程均有专业的技术人员把关，确保产品质量。优质的产品、成熟的技术，合理的报价，准时的交货，满足您临时或长期的空间需求。我公司以质量第一，客户第一，信誉第一为宗旨，努力为所有客户提供最优质的产品和最满意的服务。

Hebei Jiaqiang Energy saving Technology Co., Ltd., as one of the professional manufacturers of integrated modular houses in China, has professional technical personnel to ensure product quality throughout the entire process, from the incoming production inspection of materials and components to the quality inspection of products leaving the factory. High quality products, mature technology, reasonable pricing, timely delivery, meet your temporary or long-term space needs. Our company adheres to the principle of quality first, customer first, and reputation first, and strives to provide all customers with the highest quality products and most satisfactory services.

Main application areas

主要应用领域



A mobile and comfortable home 移动舒适的家

家的灵动延伸，以创新设计赋予空间无限可能
The dynamic extension of home, endowing space with infinite possibilities through innovative design



Emergency rescue and residential improvement 应急救援与居住改善

以快速部署、模块化集成和高效空间利用，为紧急救援提供全方位、一站式的解决方案

Provide comprehensive and one-stop solutions for emergency rescue through rapid deployment, modular integration, and efficient space utilization



Equipment that supports the march 行军配套

快速部署，实现资源高效利用和保障
achieving efficient resource use and security



Engineering Camp 工程营地

高效空间的解决方案，集功能完善与快速部署于一体。
A solution for efficient space that combines comprehensive functionality and rapid deployment



Cultural tourism homestay 文旅民宿

融自然与舒适为一体，拓展旅行居住的全新可能
Integrating nature and comfort, expanding new possibilities for travel and living

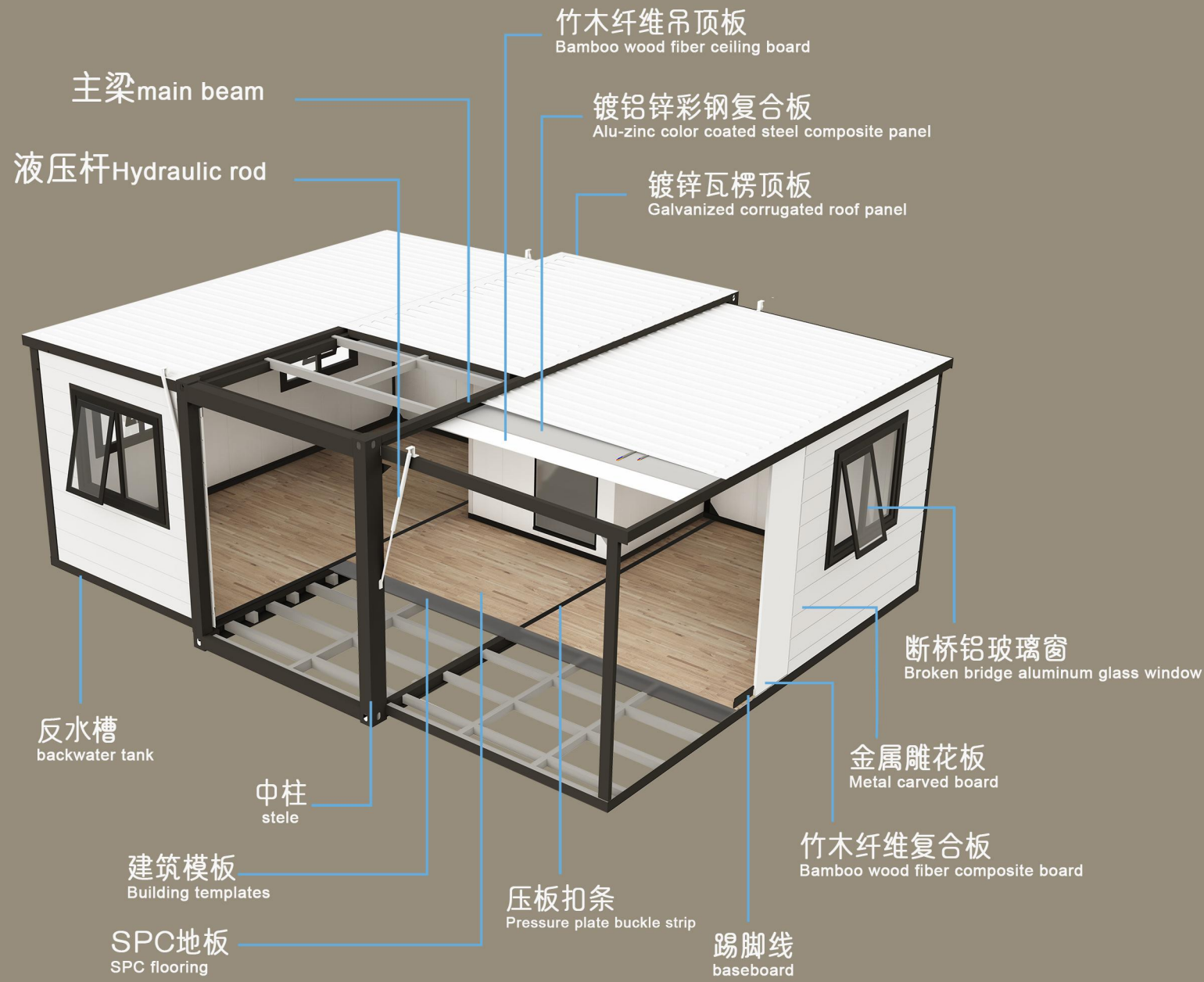


Medical Service 医疗服务

为特定医疗服务场景，提供高效、灵活的医疗场景支持
Provide efficient and flexible medical scene support for specific medical service scenarios

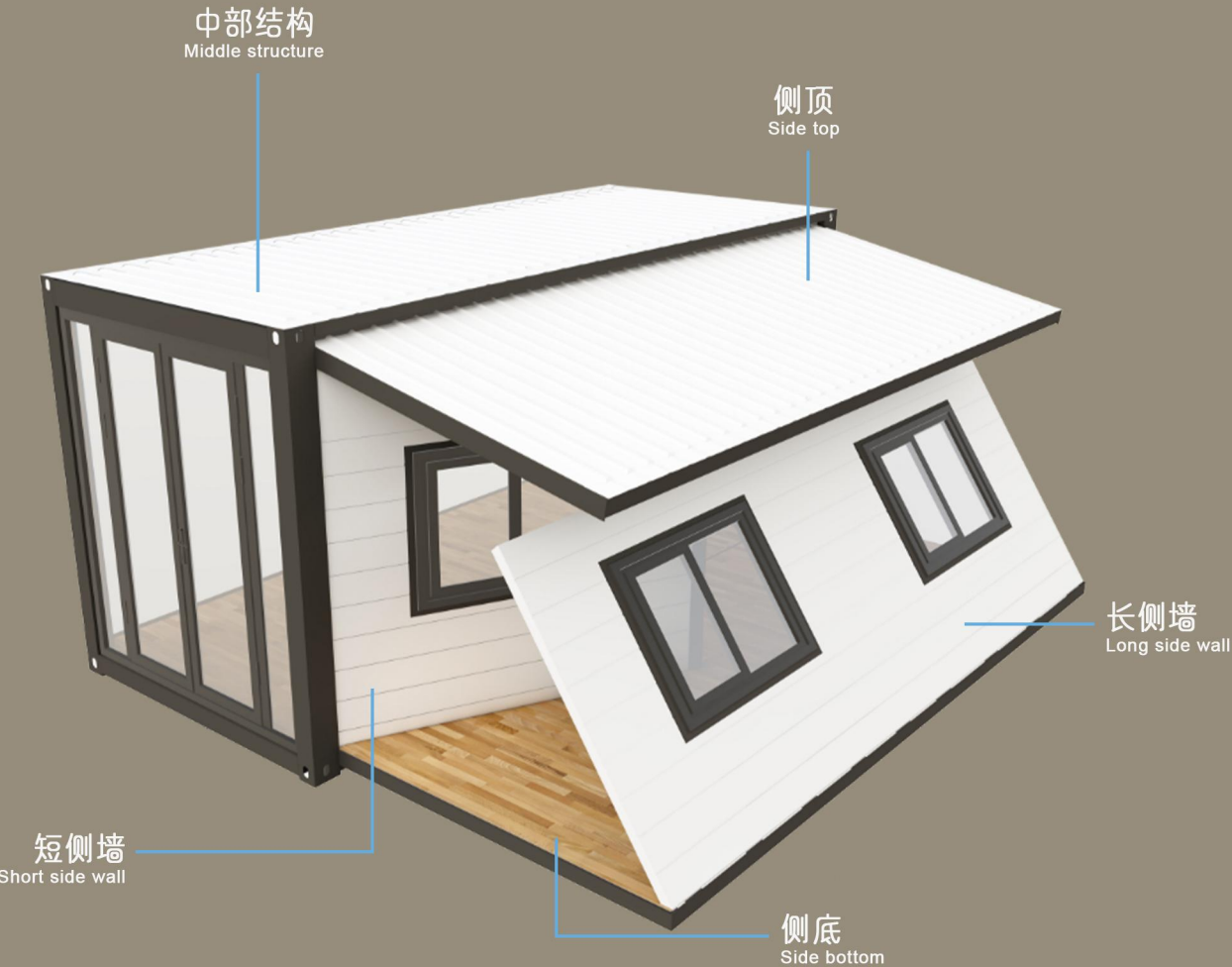
Product Introduction

产品介绍



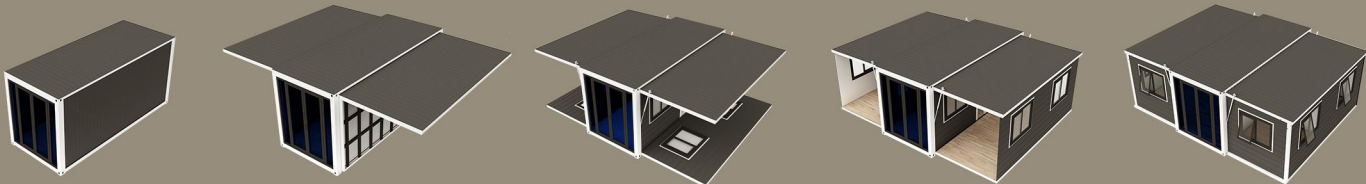
折叠箱分为分为中部结构、侧顶、侧底、长侧墙、短侧墙5大部分，各部分采用合页、铰链进行连接，侧面可以重复折叠、展开，方便移动搬迁。

The folding box is divided into five parts: central structure, side top, side bottom, long side wall, and short side wall. Each part is connected by hinges and hinges, and the side can be repeatedly folded and unfolded for easy movement and relocation.



折叠箱结构采用热镀锌钢材焊接，钢材材质不低于Q235B，钢材表面进行静电喷涂，增加防腐效果。墙面采用75mm竹木纤维复合板+金属雕花板，屋面采用3层结构，保证防水保温效果。

The folding box structure is welded with hot-dip galvanized steel, with a steel material not lower than Q235B. The steel surface is electrostatically sprayed to increase the anti-corrosion effect. The wall is made of 75mm bamboo wood fiber composite board plus metal carved board, and the roof adopts a 3-layer structure to ensure waterproof and thermal insulation effect.



安装简易图 Installation diagram

Spatial layout 空间布局



双翼拓展箱-700mm
Double wing expansion box-700mm

外形尺寸External size(mm): L5900*W4800*H2480
内部尺寸Internal size(mm): L5310*W4650*H2240
折叠尺寸Folded size(mm): L5900*W700*H2480

会议室
Meeting room



双翼拓展箱-2200mm
Double wing expansion box-2200mm

外形尺寸External size(mm): L5900*W6300*H2480
内部尺寸Internal size(mm): L5310*W6150*H2240
折叠尺寸Folded size(mm): L5900*W2200*H2480

一个客厅 两个卧室 一个卫生间
One living room, two bedrooms, one bathroom



平顶拓展箱-2200mm
Flat roof expansion box-2200mm

外形尺寸External size(mm): L5900*W6420*H2460
内部尺寸Internal size(mm): L5740*W6270*H2260
折叠尺寸Folded size(mm): L5900*W2250*H2460

一个客厅 一个卧室 一个卫生间
One living room, bedroom, bathroom



大双翼拓展箱-700mm
Large double wing expansion box-700mm

外形尺寸External size(mm): L11800*W4800*H2480
内部尺寸Internal size(mm): L11210*W4650*H2240
折叠尺寸Folded size(mm): L11800*W700*H2480

超大客厅
Oversized living room



大双翼拓展箱-2200mm (布局一)
Large double wing expansion box-2200mm(layout 1)

外形尺寸External size(mm): L11800*W6300*H2480
内部尺寸Internal size(mm): L11210*W6150*H2240
折叠尺寸Folded size(mm): L11800*W2200*H2480

两个客厅 两个卧室 一个卫生间
Two living room, bedrooms, one bathroom



大双翼拓展箱-2200mm (布局二)
Large double wing expansion box-2200mm(layout 2)

外形尺寸External size(mm): L11800*W6300*H2480
内部尺寸Internal size(mm): L11210*W6150*H2240
折叠尺寸Folded size(mm): L11800*W2200*H2480

两个客厅 三个卧室 一个卫生间
Two living room, three bedrooms, one bathroom

六种布局案例展示 Six Layout Case Studies Presentation

*效果图布局仅供参考
实际布局可按需定制

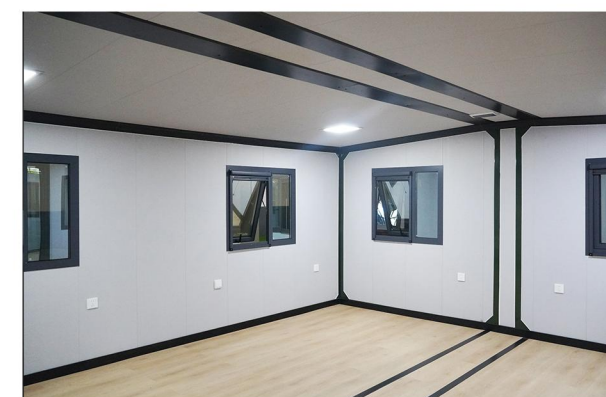
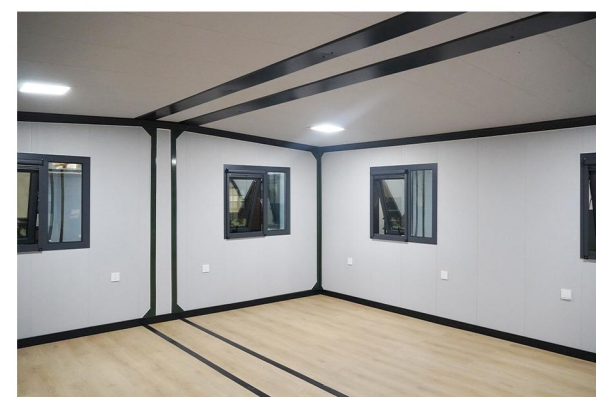
* Layout is for reference only, actual layout
can be customized according to needs



看全景
View panoramic view

双翼拓展箱—700mm

Double wing expansion box -700mm



尺寸 | L5900*W4800*H2480(外形external)

(mm) L5310*W4650*H2240(内部internal)

L5900*W700*H2480(折叠folded)

颜色 | 可任意定制墙板、门窗、框架的颜色

Customisable colours for wall panels, windows, doors and frames

空间 | 客厅、厨房、卫生间

living room, kitchen, bathroom

运输 | 40英尺高柜集装箱可装6套

A 40 foot high container can hold 6 sets





看全景
View panoramic view

双翼拓展箱-2200mm

Double wing expansion box -2200mm



尺寸 | L5900*W6300*H2480(外形external)

(mm) L5310*W6150*H2240(内部internal)

L5900*W2200*H2480(折叠folded)

定制 | 可任意定制墙板、门窗、框架的材质及颜色

Customisable colours for wall panels, windows, doors and frames

空间 | 2卧室、客厅、厨房、卫生间

2 bedrooms, living room, kitchen, bathroom

运输 | 40英尺高柜集装箱可装2套

A 40 foot high container can hold 2 sets





看全景
View panoramic view

平顶拓展箱—2200mm

Flat top expansion box -2200mm



尺寸 | L5900*W6420*H2460(外形external)

(mm) L5740*W6270*H2260(内部internal)

L5900*W2250*H2460(折叠folded)

颜色 | 可任意定制墙板、门窗、框架的颜色

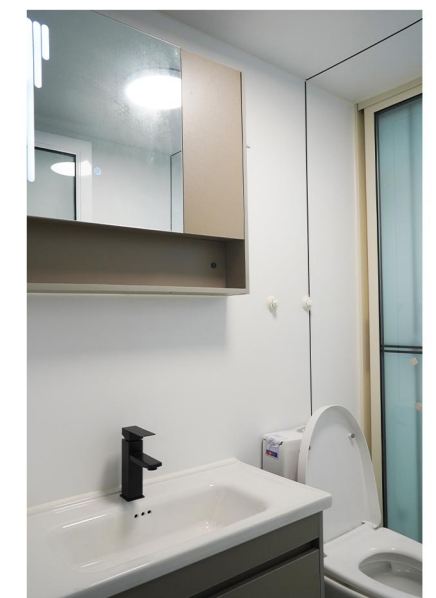
Customisable colours for wall panels, windows, doors and frames

空间 | 客厅、厨房、会议室、卫生间

Living room, kitchen, conference room, bathroom

运输 | 40尺英尺高柜集装箱可装2套

A 40 foot high container can hold 2 sets





看全景
View panoramic view

平顶拓展箱—2200mm(二层加阳台)

Flat top expansion box -2200mm (second floor with balcony)



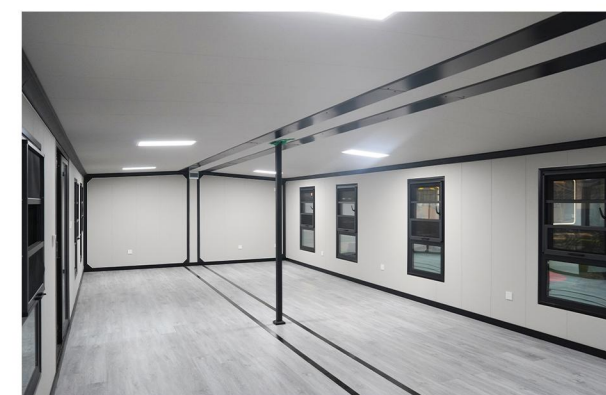
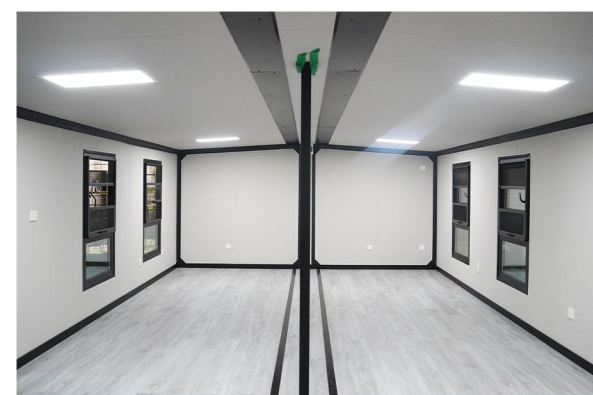
尺寸 | L5900*W6420*H2460(外部external)
(mm) L5740*W6270*H2260(内部internal)
L5900*W2250*H2460(折叠folded)

颜色 | 可任意定制墙板、门窗、框架的颜色
Customisable colours for wall panels, windows, doors and frames

空间 | 2卧室、客厅、厨房、卫生间
2 bedrooms, living room, kitchen, bathroom

运输 | 40尺英尺高柜集装箱可装1套
A 40 foot high container can hold one set





看全景
View panoramic view

大双翼拓展箱—700mm

Large Double Wing Expansion Box -700mm

尺寸 | L11800*W4800*H2480(外形external)

(mm) L11210*W4650*H2240(内部internal)

L11800*W700*H2480(折叠folded)

颜色 | 可任意定制墙板、门窗、框架的颜色

Customisable colours for wall panels, windows, doors and frames

空间 | 客厅

living room

运输 | 40英尺高柜集装箱可装3套

A 40 foot high container can hold 3 sets

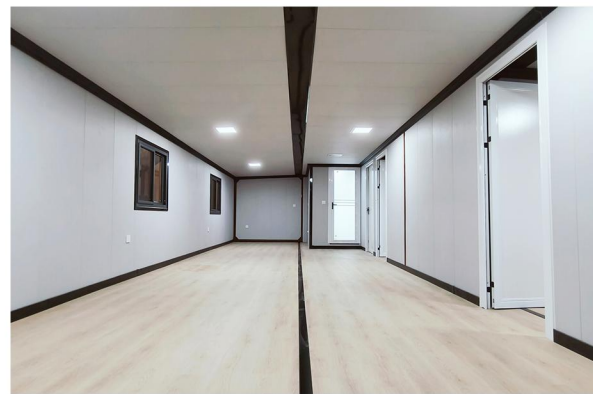




看全景
View panoramic view

大双翼拓展箱—2200mm

Large Double Wing Expansion Box -2200mm



尺寸 | L11800*W6300*H2480(外形external)

(mm) L11210*W6150*H2240(内部internal)

L11800*W2200*H2480(折叠folded)

颜色 | 可任意定制墙板、门窗、框架的颜色

Customize the color of wall panels, doors, windows and frames

空间 | 2卧室、客厅、厨房、卫生间

2 bedrooms, living room, kitchen, bathroom

运输 | 40英尺高柜集装箱可装1套

A 40 foot high container can hold one set



Structural characteristics

结构特点

A 热镀锌钢材、静电粉末喷涂，使用寿命可达**30年**
Hot-dip galvanized steel, electrostatic powder coating, service life of up to 30 years

B CO₂气体保护电弧焊，抗裂性能高，**变形小**，整体性好
Carbon dioxide gas shielded arc welding, high anti-cracking performance, not easy to deform, good integrity

C 可抵抗**11级大风**，**8级地震**
Resistant to level 11 winds and level 8 earthquakes.

backwater tank 反水槽

侧面增设反水槽，设计在墙体底部，用以收集和引导水流至指定排水系统的凹槽结构，预防墙体渗漏，有效保护室内装修。

Add a backwater tank on the side, designed at the bottom of the wall to collect and direct water flow to the designated drainage system of the groove structure, to prevent wall leakage, effective protection of interior decoration

Rectangular tube main beam 矩形管主梁

3mm*100矩形管主梁，地板可承重**600Kg/m²**

3mm*100 rectangular tube main beams with a floor load capacity of 600Kg/m²

Rectangular tube main beam 矩形管主梁

3mm*100矩形管主梁，屋面承重**100Kg/m²**
3mm*100 rectangular tube main beam with a roof load of 100Kg/m²

P-type tube P型管

2mm加厚P型管，**外观无焊点**，光滑美观
2mm thickened P-tube, no welded joints, smooth and beautiful appearance

Rectangular tube secondary beam 矩形管次梁

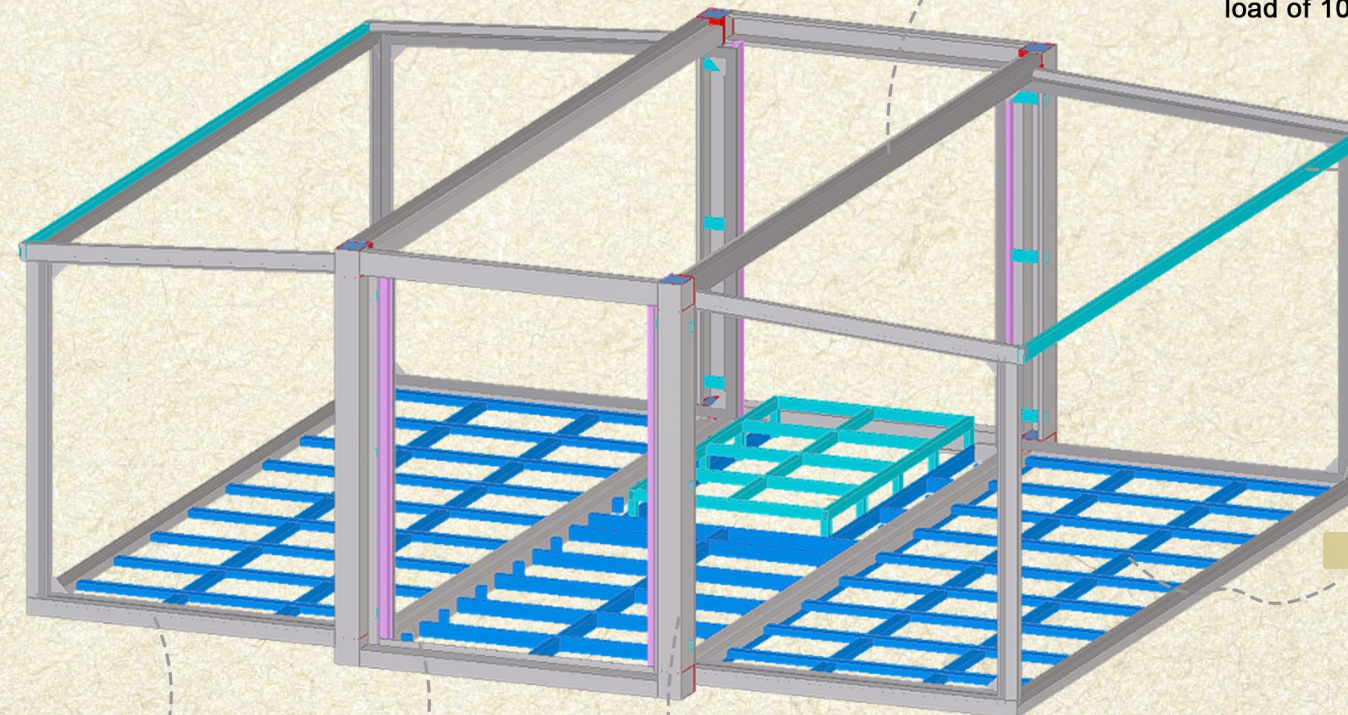
2mm*80*40矩形管次梁，**间距550mm**，纵向双道加密，地板稳固不震动

2mm*80*40 rectangular tubular secondary sorghum with a spacing of 550mm, with longitudinal double-channel encryption for a stable, non-shaking floor.

Column 立柱

采用**3mm钢板**整体包裹技术，外侧完全无焊点，确保立柱外观的整体性和流畅性，兼顾强度与美观的需求

Adopting 3mm steel plate overall wrapping technology, the outer side is completely free of welded joints, which ensures the integrity and smoothness of the column's appearance, and takes into account the requirements of strength and aesthetics.





heat preservation

保温



soundproof

隔音



waterproof

防水



Flame retardant

阻燃

防水:屋面增加镀锌瓦楞钢板, 采用硅酮密封胶进行缝隙封堵, 采用丁基胶带进行节点处理。通过折叠箱强烈喷水试验, 在距离折叠箱3m位置进行喷水, 水流量12.5L/min, 确定了整体建筑的防水性能。

Waterproof: Galvanized corrugated steel plates are added to the roof, and silicone sealant is used for gap sealing. Butyl tape is used for node treatment. By conducting a strong water spray test on the folding box, water was sprayed at a distance of 3m from the folding box with a flow rate of 12.5L/min to determine the overall waterproof performance of the building.

保温, 隔音:墙面复合板厚度达到50mm, 外面贴15mm金属雕花板, 进一步提升保温隔音性能。

防火:墙面复合板芯材采用防火保温材质, 屋面复合板芯材采用玻璃丝棉, 防火等级均达到A1级, 缝隙同时采用防火密封条进行封堵。

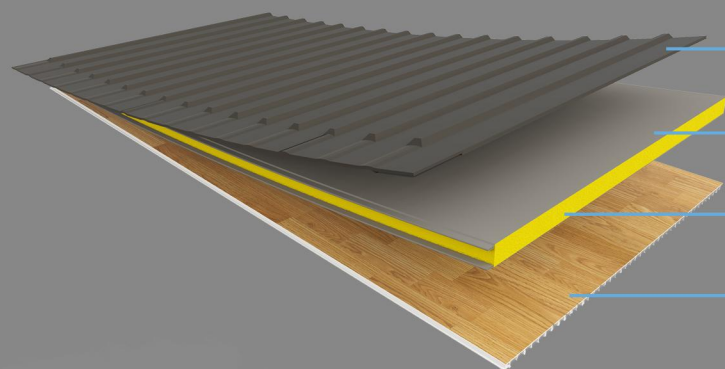
Thermal insulation and sound insulation: The thickness of the wall composite board reaches 50mm, and a 15mm metal carved board is pasted on the outside to further enhance the thermal insulation and sound insulation performance.

Fire prevention: The core materials of the wall composite panels adopt fireproof and thermal insulation materials, while the core materials of the roof composite panels use glass wool. Both of them have reached the A1 fireproof grade. Meanwhile, the gaps are sealed with fireproof sealing strips.



双层中空玻璃门窗

Double layered insulated glass doors and windows



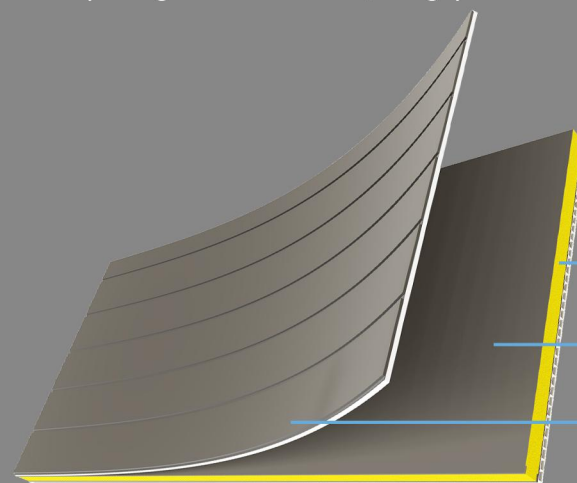
屋顶分面图
Roof plan

瓦楞板
Corrugated board

镀锌彩涂钢板
Galvanized color coated steel plate

阻燃玻璃丝绵保温层
Flame retardant glass fiber insulation layer

竹木纤维板
Bamboo wood fiberboard



墙板分面图
Wall panel sectional drawing

竹木纤维板
Bamboo wood fiberboard

防火保温层
Fire protection insulation layer

镀锌铝板
Galvanized aluminum sheet

金属雕花板
Metal carved board

Service system 服务体系



河北佳强节能科技有限公司

国内国际

Domestic and international

在全球化深度绑定的今天，企业要在国内和国际市场上都取得竞争优势，必须构建一个全面而高效的服务体系。河北佳强作为中国装配式建筑专业制造商，集销售租赁、设计定制、生产制造、吊运安装于一体，拥有完备的生产设备、充足的库存产品、完善的服务体系，能够为客户提供装配式建筑全方位的产品和相关服务，业务可覆盖世界绝大部分的国家或地区，以真诚专业的态度满足客户临时或长期的空间需求。

In today's deeply globalized world, in order for enterprises to gain competitive advantages in both domestic and international markets, they must build a comprehensive and efficient service system. As a professional manufacturer of prefabricated buildings in China, Hebei Jiaqiang integrates sales and leasing, design and customization, production and manufacturing, and lifting and installation. It has complete production equipment, sufficient inventory products, and a perfect service system, and can provide customers with comprehensive products and related services for prefabricated buildings. Its business can cover the vast majority of countries or regions in the world, and it meets customers' temporary or long-term space needs with a sincere and professional attitude.

售前咨询

Pre sales consultation

1. 产品推荐：根据客户需求，确定产品推荐
2. 咨询解答：专人介绍产品性能特点、安装方式
3. 需求分析：为客户提供更加精准的产品解决方案
4. 技术支持与效果设计：使客户更直观感受产品的特点与效果
5. 商务条款：预算分析、交货周期、付款方式等进行协商，以明确各自的权利与义务

1. Product recommendation: Determine product recommendations based on customer needs
2. Consultation and answer: A dedicated person introduces the product's performance characteristics and installation methods
3. Requirement analysis: Provide customers with more accurate product solutions
4. Technical support and effect design: enable customers to have a more intuitive experience of the product's features and effects
5. Business terms: Negotiate on budget analysis, delivery time, payment methods, etc. to clarify respective rights and obligations

售中对接

Sales docking

1. 订单核实与跟进：设置项目经理对项目进行全程跟进
2. 供应链管理体系：确保原材料和零部件的及时供应
3. 质量监控：事实全面质量管理，确保每一个产品符合客户的质量和标准
4. 物流配送服务：提供全方位、高品质的物流解决方案
5. 现场安装与交接：严格遵守安全规范，确保产品的安装质量，向客户提供已安装产品培训和指导。

1. Order verification and follow-up: Set up a project manager to follow up on the entire project process
2. Supply Chain Management System: Ensure timely supply of raw materials and components
3. Quality monitoring: Comprehensive quality management ensures that every product meets the quality and standards of customers
4. Logistics delivery services: providing comprehensive and high-quality logistics solutions
5. On site installation and handover: Strictly abide by safety regulations, ensure the installation quality of products, and provide customers with training and guidance on installed products.

售后服务

after-sale service

1. 快速响应，即时解决：专业团队7*24小时全天候服务
2. 超长质保，终身维护：防水保修1年，终身质量维护
3. 透明服务，诚信为本：坚持“透明化”原则，所有服务费用、维修流程、所需时间等信息均向客户明确告知
4. 客户服务，监督反馈：公司通过内部监督和外部客户反馈相结合的方式，不断优化服务流程
5. 增值服务，超越期待：从多个维度提升客户价值，如定期维护检查、使用培训、延长保修等

1. Quick response and instant resolution: Professional team provides 24/7 service around the clock
2. Long term warranty, lifetime maintenance: Waterproof warranty for 1years, lifetime quality maintenance
3. Transparent service, integrity-based: Adhere to the principle of "transparency", and clearly inform customers of all service fees, repair processes, required time, and other information
4. Customer service and supervision feedback: The company continuously optimizes service processes through a combination of internal supervision and external customer feedback
5. Value added services, exceeding expectations: enhancing customer value from multiple dimensions, such as regular maintenance checks, usage training, extended warranties, etc

服务体系承诺

Service System Commitment

佳强服务体系以一系列具体而坚定的承诺，构建了一个以客户为中心、以专业为基础、以诚信为灵魂的服务生态。这些承诺不仅是我们对客户的庄严保证，更是我们自我鞭策、不断前行的动力源泉。佳强服务体系将持续秉承这些承诺，携手每一位客户，实现互利共赢，共创更大的价值。

Jiaqiang Service System has built a customer-centric, professional based, and integrity driven service ecosystem with a series of specific and firm commitments. These commitments are not only our solemn guarantee to our customers, but also the driving force behind our self motivation and continuous progress. Jiaqiang Service System will continue to uphold these commitments, work together with every customer to achieve mutual benefit and win-win results, and create greater value together.

Sales countries and regions

销售国家与地区

累计销售超过20个国家或地区
Accumulated sales in over 20 countries or regions

20+

累计销售超过1000+产品
Accumulated sales of over 1000+products

1000+



LOGISTICS AND TRANSPORTATION SYSTEM

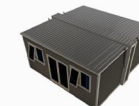
物流及运输体系



Maritime
transportation system
海上运输体系



40英尺高柜集装箱 | 40 HQ container



6 sets
双翼拓展箱——700mm
Double wing expansion box



2 sets
双翼拓展箱——2200mm
Double wing expansion box



3 sets
大双翼拓展箱——700mm
Large Double Wing Expansion Box



1 sets
大双翼拓展箱——2200mm
Large Double Wing Expansion Box



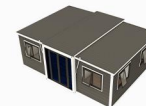
Highway
transportation system
公路运输体系



13.75m半挂车 | 13.75m semi-trailer



6 sets
双翼拓展箱——700mm
Double wing expansion box



2 sets
双翼拓展箱——2200mm
Double wing expansion box



3 sets
大双翼拓展箱——700mm
Large Double Wing Expansion Box



1 sets
大双翼拓展箱——2200mm
Large Double Wing Expansion Box

■ Jiaqiang Transportation System 佳强运输体系

针对不同客户和具体项目情况，佳强提供定制化的物流解决方案。从生产打包、临时库存到项目发运，每个环节都可根据客户需求进行灵活调整，满足个性化需求。这种定制化服务不仅提升了客户体验，还帮助客户有效控制物流成本，提升整体运营效率。

For different customers and specific project situations, but Jiaqiang provides customized logistics solutions. From production packing, temporary inventory to project shipment, each step of the process can be flexibly adjusted to meet individual needs according to customer demands. This customized service not only enhances customer experience, but also helps customers effectively control logistics costs and improve overall operational efficiency.